

Hershey Bar Gift Box Template with Bonus Tag!


For use with a full size Hershey Chocolate candy bar that measures about 2 inch x 6 inch x 1/4 inch thick

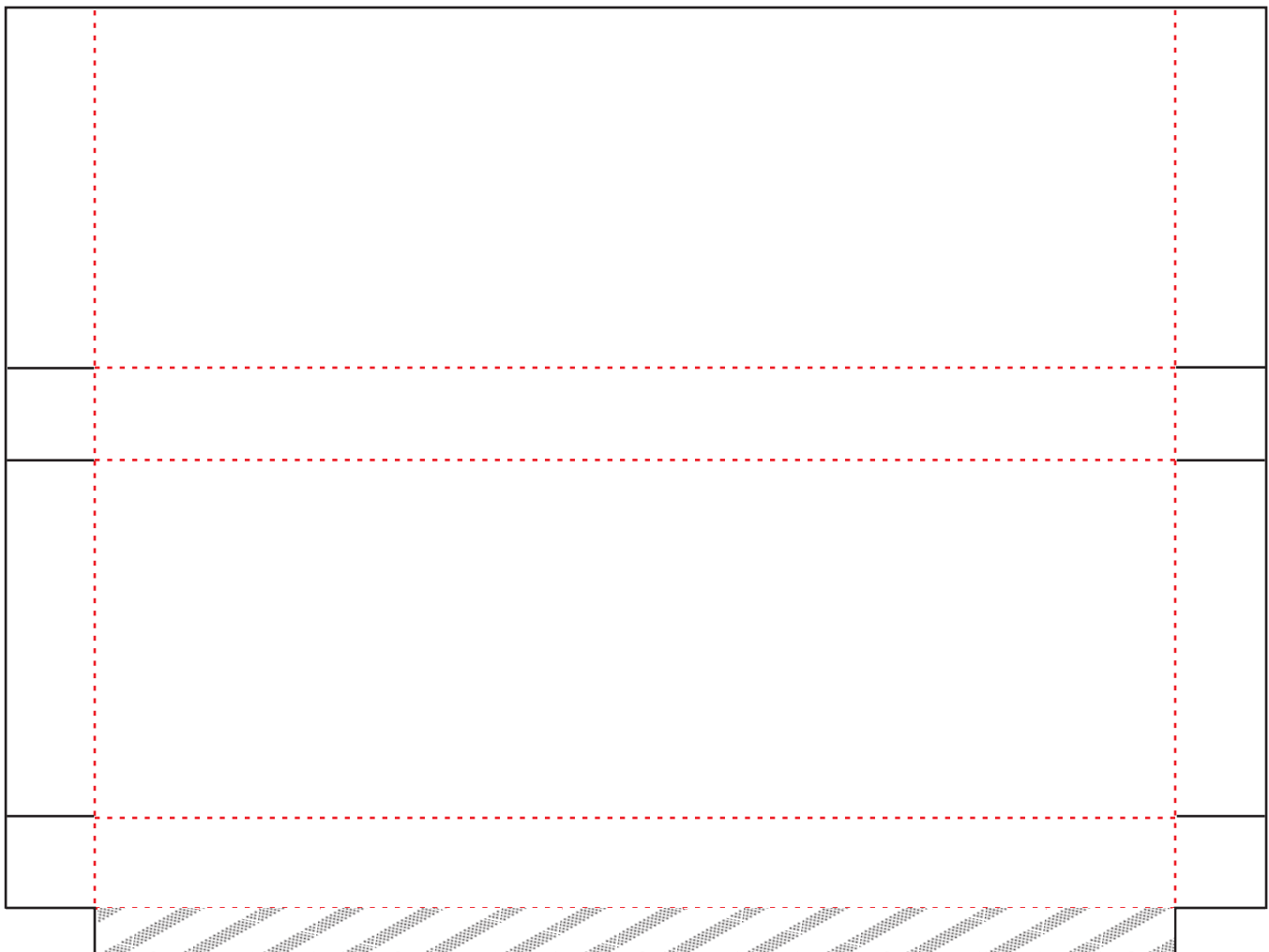
1. Print onto 8.5" x 11" card stock (65# to 80# is best.)
2. Cut along the black lines.
3. Fold the red dotted lines. Tip: Crease paper using the back of an Xacto knife or the tip of unopen pointy scissors along with a ruler.
4. Decorate by rubber stamping, embossing and/or coloring!
5. Use glue along 'overlap area' after decorating and pre-folding lines. Tip: Use washi tape or blue painters tape to hold glued area while drying.

Important...
In print dialog box be sure 'Page Sizing or scaling' is set to 'Actual Size or 100%' so you get an accurate print size.

————— cut line

..... fold line

 overlap area - add glue after cutout and folded



~~CHOCOLATE~~
chocolate

TO: _____